

Great Smoky Mountains National Park - Sugarlands Visitor Center Pollinator Garden

Plant list, seasonality, and associated pollinators

Common name	Scientific name	Present in garden beds	Monthly bloom season												Bees	Butterflies, moths	Hummingbirds	Beetles	Other ¹
			J	F	M	A	M	J	J	A	S	O	N	D					
WILDFLOWERS																			
Alumroot	<i>Heuchera americana</i>	3,6				A	M	J									•		•
Aster	<i>Aster sp.</i>	4										J	A	S	O		•		•
Bee-balm	<i>Monarda sp.</i>	4,5										J	A	S	O		•		•
Big-leaved aster	<i>Eurybia macrophylla</i>	3,5											A	S	O		•		•
Black-eyed Susan	<i>Rudbeckia hirta</i>	1,2,3,4,6,10										J	A	S	O		•		•
Bleeding heart	<i>Dicentra eximia</i>	7				A	M	J									•		•
Bloodroot	<i>Sanguinaria canadensis</i>	7				M	A										•		•
Blue star	<i>Amsonia tabernaemontana</i>	4,5				A	M										•		•
Butterfly milkweed	<i>Asclepias tuberosa</i>	1,3							M	J	J	A					•		•
Cardinal flower	<i>Lobelia cardinalis</i>	3										J	A	S	O		•		•
Common milkweed	<i>Asclepias syriaca</i>	1										J	J	A			•		•
Coreopsis	<i>Coreopsis sp.</i>	1,5				A	M	J	J	A	S						•		•
Crested dwarf iris	<i>Iris cristata</i>	6				A	M										•		•
Early meadowrue	<i>Thalictrum dioicum</i>	6							M	A							•		•
Foamflower	<i>Tiarella cordifolia</i>	5				A	M	J									•		•
Fragrant sumac	<i>Rhus aromatica</i>	8,9				F	M	A									•		•
Frost aster	<i>Symphotrichum pilosum</i>	2,3,5											A	S	O		•		•
Goat's beard	<i>Aruncus dioicus</i>	6							M	J	J						•		•
Golden ragwort	<i>Packera aurea</i>	3,4,5,7				A	M	J	J	A							•		•
Goldenrod	<i>Solidago sp.</i>	6,10										J	A	S	O		•		•
Green dragon	<i>Arisaema dracontium</i>	10							M								•		•
Indian pink	<i>Spigelia marilandica</i>	4,6				A	M	J									•		•
Lance-leaved loosestrife	<i>Lysimachia lanceolata</i>	2,6							J	J	A						•		•
Mayapple	<i>Podophyllum peltatum</i>	6				A	M	J									•		•
Meadow phlox	<i>Phlox maculata</i>	1,2,5							J	J	A	S					•		•
Mountain mint	<i>Pycnanthemum montanum</i>	1										J	J	A			•		•
New England aster	<i>Symphotrichum novae-angliae</i>	10											A	S	O		•		•
Pale Indian plantain	<i>Arnoglossum atriplicifolium</i>	6										J	J	A	S	O	•		•
Scarlet bee-balm	<i>Monarda didyma</i>	10										J	A	S	O		•		•
Sochan / Cutleaf coneflower	<i>Rudbeckia laciniata</i>	4										J	A	S	O		•		•
Solomon's seal	<i>Polygonatum sp.</i>	6				A	M										•		•
St. John's wort	<i>Hypericum sp.</i>	6							J	J	A	S	O				•		•
Stoneroot	<i>Collinsonia canadensis</i>	2											A	S	O		•		•
Sundrops	<i>Oenothera fruticosa</i>	2				A	M	J	J	A							•		•
Sunflower	<i>Helianthus sp.</i>	5										J	A	S	O		•		•
Tall ironweed	<i>Vernonia gigantea</i>	3,5,6,7,10											A	S	O		•		•
Thimbleweed	<i>Anemone virginiana</i>	1,3,4,5,7							M	J	J						•		•
Virginia bluebell	<i>Mertensia virginica</i>	6,7							M	A							•		•
White bergamot	<i>Monarda clinopodia</i>	2										J	J				•		•
White turtlehead	<i>Chelone glabra</i>	5										J	A	S			•		•
White wood aster	<i>Eurybia divaricata</i>	2,3,5,6											A	S	O		•		•
Whorled loosestrife	<i>Lysimachia quadrifolia</i>	5							M	J	J	A					•		•
Wild geranium	<i>Geranium maculatum</i>	1,3,4,5				A	M										•		•
Wingstem	<i>Verbesina alternifolia</i>	10											A	S	O		•		•
Yellow trillium	<i>Trillium luteum</i>	7				A	M										•		•

Great Smoky Mountains National Park - Sugarlands Visitor Center Pollinator Garden

Plant list, seasonality, and associated pollinators

Common name	Scientific name	Present in garden beds	Monthly bloom season												Bees	Butterflies, moths	Hummingbirds	Beetles	Other ¹
			J	F	M	A	M	J	J	A	S	O	N	D					
TREES																			
Fringe tree	<i>Chionanthus virginicus</i>	1				A	M									•	•	•	
Red maple	<i>Acer rubrum</i>	2,3,5	F	M	A											•		•	
Redbud	<i>Cercis canadensis</i>	2,10	M	A												•		•	
SHRUBS																			
Blueberry	<i>Vaccinium sp.</i>	5				M	J									•	•		
Carolina allspice / Sweet shrub	<i>Calycanthus floridus</i>	2,6				M	J									•		•	
Carolina rose	<i>Rosa carolina</i>	4				M	J	J								•		•	
Hearts-a-bustin' / Strawberry bush	<i>Euonymus americanus</i>	7				M										•			
Mountain false indigo	<i>Amorpha glabra</i>	1				M	J									•		•	
New Jersey tea	<i>Ceanothus americanus</i>	2,5				M	J	J								•	•	•	
Red chokeberry	<i>Aronia arbutifolia</i>	5				A	M									•		•	
Spicebush	<i>Lindera benzoin</i>	2				M	A									•		•	
Wild raisin / Blue haw	<i>Viburnum cassinoides</i>	4				M	J									•		•	
Yucca / Spanish bayonet	<i>Yucca filamentosa</i>	5,6				M	J									•			
VINES																			
Climbing hydrangea / Woodvamp	<i>Decumaria barbara</i>	5				M	J									•	•	•	
Crossvine	<i>Bignonia capreolata</i>	7				A	M	J								•	•	•	
Purple passionflower / Maypop	<i>Passiflora incarnata</i>	9				M	J	J								•	•	•	
Yellow passionflower	<i>Passiflora lutea</i>	2						J	J	A	S					•	•		
GRASSES & SEDGES																			
Blue-eyed grass	<i>Sisyrinchium angustifolium</i>	5				A	M	J								•		•	
Blue wood sedge	<i>Carex flaccosperma</i>	5				M	J									•			
Sedge	<i>Carex sp.</i>	2				A	M	J								•			
FERNS																			
Bracken fern	<i>Pteridium latiusculum</i>	2,5																•	
Christmas fern	<i>Polystichum acrostichoides</i>	4,6,7																•	
Dryopteris fern	<i>Dryopteris sp.</i>	2,5																•	

¹ Other pollinators include insects (ants, flies, wasps), Baltimore & orchard orioles, small mammals, reptiles, wind

Compiled by Patricia and Bruce Mayhugh. Last updated March 22, 2023. Visit dlia.org/pollinatorgarden for more information.

Bathrooms

Back Country Office

Sugarlands Visitor Center

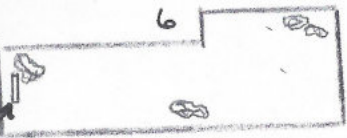
Boulders

Grass area

Benches



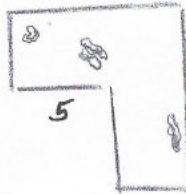
Pollinator Garden signage



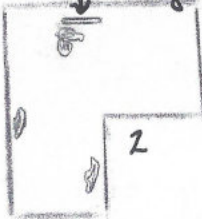
Parking

Benches

Grass area



Pollinator Garden signage



Benches

Grass area



Sugarlands Visitor Center Loop Road

